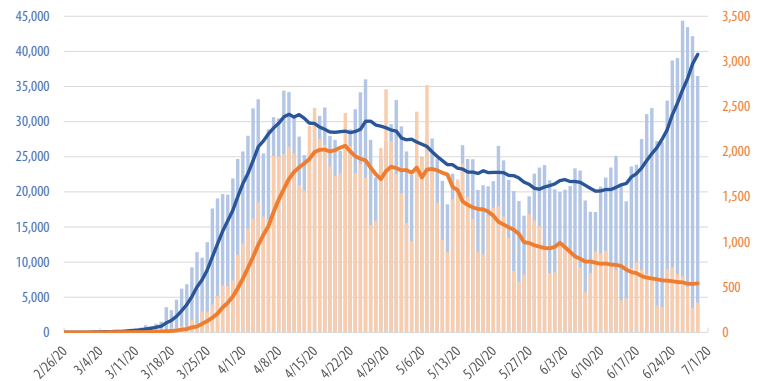


First Trust COVID-19 TRACKER

Daily New Positive Tests vs. Daily Deaths in the U.S.

February 26, 2020 - June 29, 2020



Source: Covidtracking.com

There were **273 deaths**

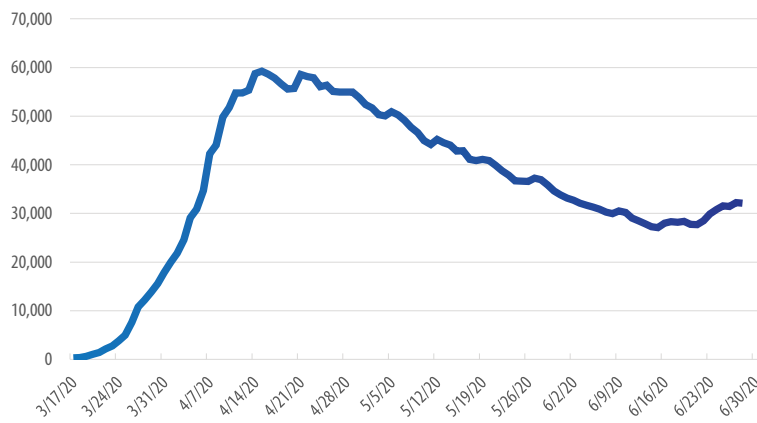
from COVID-19 in the U.S. on Sunday, June 28th, 2020.

That is **down 84%**

from the Sunday peak of 1,733 on April 19th, 2020.²

Current Hospitalizations in the U.S.

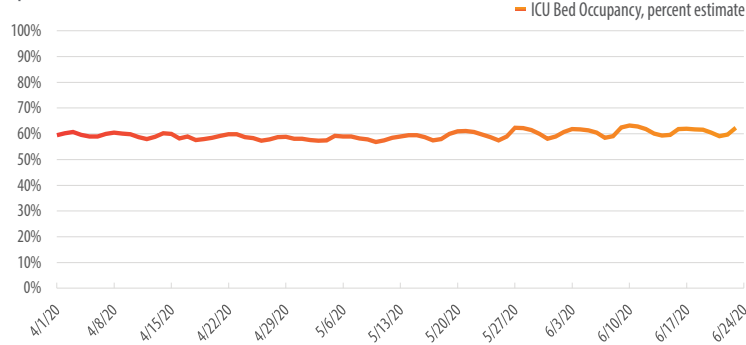
March 17, 2020 - June 29, 2020



Source: Covidtracking.com

ICU Bed Occupancy in the U.S.

April 1, 2020 - June 23, 2020



Source: CDC.gov, National Healthcare Safety Network

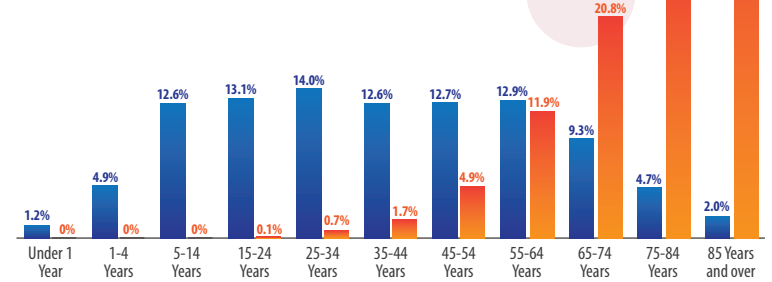
45%

of COVID-19 deaths have come from nursing homes and assisted living facilities, **which make up only 0.6% of the U.S. population.**¹

Deaths by Age vs. Share of Population in the U.S.

As of June 24, 2020

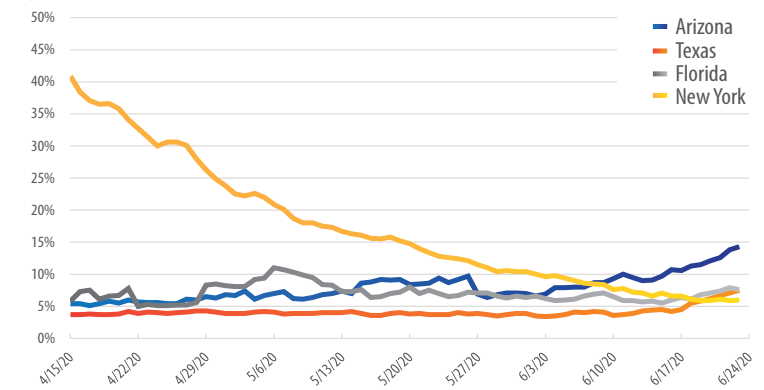
■ Percent of Population
■ Percent of Total COVID-19 Deaths



Source: CDC.gov, National Center for Health Statistics

Estimated Share of Inpatient Beds Occupied by Confirmed or Suspected COVID-19 Patients

April 15, 2020 - June 23, 2020

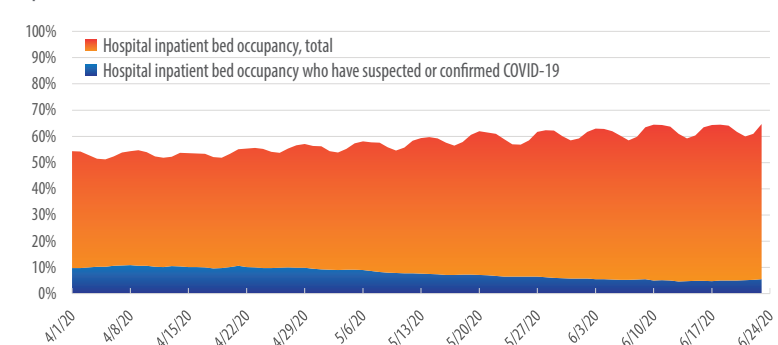


Source: CDC.gov, National Healthcare Safety Network

As of June 30, 2020, **35 states** continue to **reopen**, **11 states** have **paused reopening**, while **4 states** have begun **reversing reopening**.³

Percent of Total Hospital Capacity in the U.S.

April 1, 2020 - June 23, 2020



Source: CDC.gov, National Healthcare Safety Network

¹The Foundation for Research on Equal Opportunity (as of June 27, 2020); ²Covidtracking.com; ³The New York Times