

CREATING YOUR PHILANTHROPIC LEGACY

Solid legacy plans focus on the here and now – not the ever after. It's about making a difference you can see and encouraging others to follow. From dedicated trusts to volunteering, there are many ways to not just leave behind a legacy of generosity, but to live it.

> FOUNDATIONAL

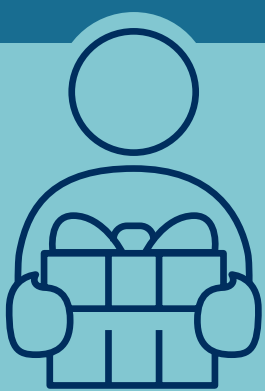
Volunteer
Start a donor advised fund



Include your family in charitable and volunteer efforts

> ADDITIONAL

Donate appreciated securities
Give via qualified charitable distributions (QCD)s.



Establish a private foundation or endowment
Consider charitable lead or remainder trusts

Start a scholarship



MAKE A DIFFERENCE.

We're here to help you carry out your mission.
Contact us to get started.

RAYMOND JAMES®